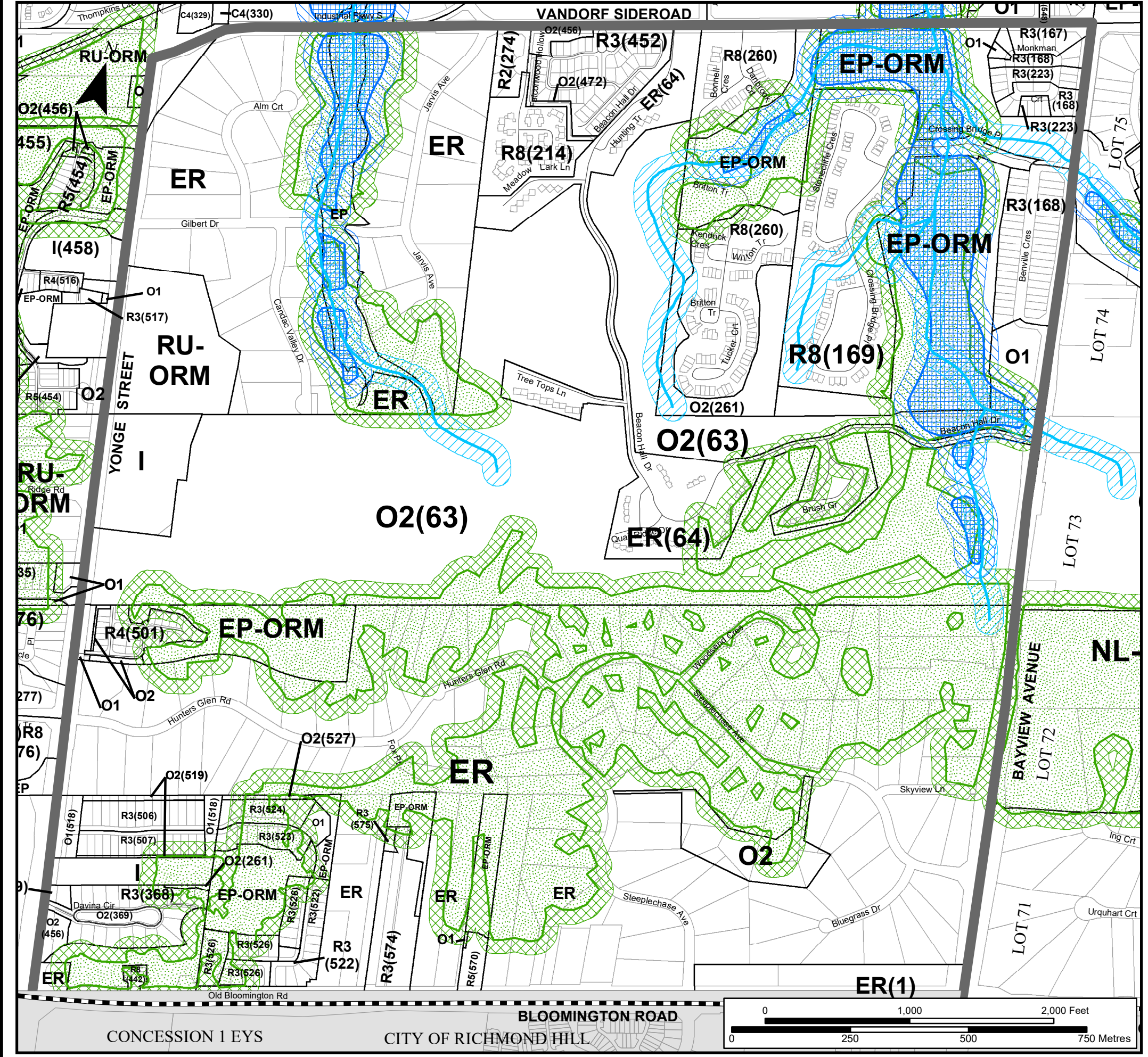


# SCHEDULE 'B' TO BY-LAW 6000-17 KEY NATURAL HERITAGE FEATURES & HYDROLOGICALLY SENSITIVE FEATURES MAP NO. 7



### ZONING LEGEND

RESIDENTIAL ZONES	COMMERCIAL ZONES	OPEN SPACE ZONES
<b>ER</b> Estate Residential	<b>C1</b> Convenience Commercial	<b>EP</b> Environmental Protection
<b>ER-ORM</b> Oak Ridges Moraine Estate Residential	<b>C2</b> Central Commercial	<b>EP-ORM</b> Oak Ridges Moraine Environmental Protection
<b>R1</b> Detached First Density Residential	<b>C3</b> Service Commercial	<b>O1</b> Public Open Space
<b>R2</b> Detached Second Density Residential	<b>C4</b> Community Commercial	<b>O2</b> Private Open Space
<b>R3</b> Detached Third Density Residential	<b>C5</b> Major Retail	<b>O-ORM</b> Oak Ridges Moraine Open Space
<b>R4</b> Detached Fourth Density Residential	<b>C6</b> Mixed Residential Commercial	<b>ORM COUNTRYSIDE AREA</b>
<b>R5</b> Detached Fifth Density Residential	<b>C7</b> Residential	<b>C-ORM</b> Oak Ridges Moraine Countryside Area
<b>R6</b> Semi-Detached and Duplex Dwelling Residential	<b>PROMENADE ZONES</b>	<b>ORM NATURAL CORE AREA</b>
<b>R7</b> Special Mixed Density Residential	<b>PD1</b> Promenade Downtown	<b>NC-ORM</b> Oak Ridges Moraine Natural Core Area
<b>R8</b> Townhouse Dwelling Residential	<b>PD2</b> Promenade Downtown - Special Mixed Density Residential	<b>ORM NATURAL LINKAGE AREA</b>
<b>RA1</b> First Density Apartment Residential	<b>PDS1</b> Promenade Downtown Shoulder - Central Commercial	<b>NL-ORM</b> Oak Ridges Moraine Natural Linkage Area
<b>RA2</b> Second Density Apartment Residential	<b>PDS2</b> Promenade Downtown Shoulder - Service Commercial	<b>KNHF &amp; HYDROLOGICALLY SENSITIVE FEATURES AND MVPZ EXCEPTION 1 ZONE</b>
<b>EMPLOYMENT ZONES</b>	<b>PDS3</b> Promenade Downtown Shoulder - Institutional	<b>KNHF-1 Zone</b> KNHF & Hydrologically Sensitive Features Exception 1 Zone
<b>E1</b> Service Employment	<b>PDS4</b> Promenade Downtown Shoulder - Special Mixed Density Residential	<b>MVPZ-1 Zone</b> MVPZ Exception 1 Zone
<b>E2</b> General Employment	<b>RURAL ZONES</b>	
<b>E-BP</b> Business Park	<b>RU</b> Rural	
<b>INSTITUTIONAL ZONES</b>	<b>RU-ORM</b> Oak Ridges Moraine Rural	
<b>I</b> Institutional		

Note: Zoning Classifications and Provisions refer to Comprehensive Zoning By-law text document

### LEGEND

Oak Ridges Moraine Conservation Plan Area	Wetland
Boundary of Oak Ridges Moraine Conservation Plan Area Ontario Regulation 140/02	Wetland MVPZ
Boundary of Oak Ridges Moraine Area Ontario Regulation 01/02	Permanent and Intermittent Streams
Map #7 Area	Permanent and Intermittent Streams MVPZ
Municipal Boundary	Waterbodies
Lot	Area of Natural and Scientific Interest (Life Science)
Railway	Woodlands
Hydro Corridor	Woodlands MVPZ
	<i>MVPZ = Minimum Vegetation Protection Zone</i>

By-Law 6000-17 consists of Schedules "A" to "E" inclusive and accordingly each schedule shall be considered in the determination of zoning provisions pertaining to individual properties.

NOTE: ZONING LINES AND PROPERTY LINES SHOWN ARE FOR INFORMATION PURPOSES ONLY. REFERENCE SHOULD BE MADE TO THE CORRESPONDING BY-LAWS AND REGISTERED PLANS.

DRAWN BY: ML	UPDATED BY: CM	APPROVED BY: ML
CREATED DATE: 05/2017	DATE UPDATED: 4/2026	FILE NAME: Schedule B Map 7 (KNHF)

